



# Alt Uses for Alt Images

**TROY DAWSON**

Alternative Images SIG Chair

✉ [tdawson@redhat.com](mailto:tdawson@redhat.com)



## **OVERALL GOALS**

The Alternate Images SIG's goal is to build and provide alternate images for CentOS Stream.

Whenever possible, these images will be created on the CentOS SIG infrastructure.



# CentOS

## Alternate Images SIG

### Progress

- We have been updating our images quarterly
- We have 6 CentOS Stream 9 Live Images you can boot up and install from.
  - Cinnamon, GNOME, KDE, Mate, XFCE, MAX, MIN
- We have a CentOS Stream 9 WSL Image for Windows users
- This quarter (January) we released out CentOS Stream 10 images
  - Four Live images - GNOME, KDE, MAX, MIN
  - WSL Image for Windows users
- All images are for x86\_64 and aarch64

centos@PurplePower:/mnt/c/WINDOWS/system32

— □ ×

```
centos@PurplePower:/mnt/c/WINDOWS/system32$ cat /etc/redhat-release
CentOS Stream release 10 (Coughlan)
centos@PurplePower:/mnt/c/WINDOWS/system32$ uname -a
Linux PurplePower 5.15.167.4-microsoft-standard-WSL2 #1 SMP Tue Nov 5 00:21:55 UTC 2024 x86_64 GNU/Linux
centos@PurplePower:/mnt/c/WINDOWS/system32$ dnf repolist
repo id                repo name
appstream              CentOS Stream 10 - AppStream
baseos                 CentOS Stream 10 - BaseOS
crb                   CentOS Stream 10 - CRB
epel                  Extra Packages for Enterprise Linux 10 - x86_64
extras-common        CentOS Stream 10 - Extras packages
centos@PurplePower:/mnt/c/WINDOWS/system32$
```

WSL  
10

```
CentOS Stream 10 (Coughlan)
Kernel 6.12.0-43.el10.x86_64 on an x86_64
```

```
localhost-live login: liveuser (automatic login)
```

```
[liveuser@localhost-live ~]$ ls
```

```
install_to_hard_drive
```

```
[liveuser@localhost-live ~]$ cat /etc/redhat-release
```

```
CentOS Stream release 10 (Coughlan)
```

```
[liveuser@localhost-live ~]$ _
```

MIN  
Live  
10

🔍 Type to search



GNOME  
Live  
10



Install to Hard Drive



KDE  
Live  
10



10:58 PM  
1/24/25

# 11:14 PM

Friday, January 24, 2025



Live System User

Password



Sleep



Restart



Shut Down



Other...

GNOME Classic

GNOME

Plasma

GNOME Classic

MAX  
Live  
10





Computer



Home



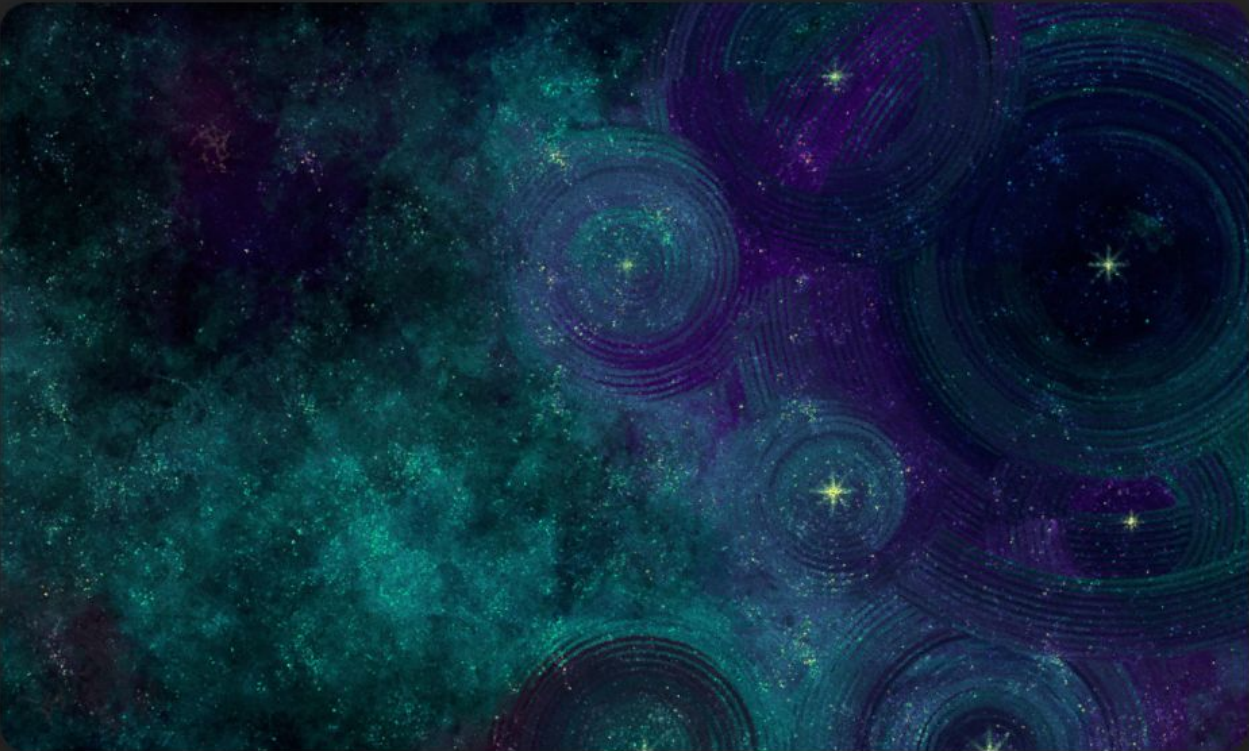
Trash



Install to Hard  
Drive

Cinnamon  
Live  
9

🔍 Type to search



**GNOME**  
Live  
9





Install to Hard  
Drive

KDE  
Live  
9



10:05 PM  
7/5/24



Computer



liveuser's Home



Install to Hard Drive



Trash

MATE  
Live  
9



1.1 GB  
Volume



Home



3.8 GB  
Volume



Install to  
Hard Drive



1.2 GB  
Volume



8.6 GB  
Volume



3.8 GB  
Volume



Trash



File System



XFCE  
Live  
9

# 11:17 PM

Friday, January 24, 2025



Live System User

Password



- GNOME Classic (Wayland)
- Standard (Wayland display server)
- Plasma (Wayland)
- Cinnamon
- Cinnamon (Software Rendering)
- GNOME Classic
- Custom
- Standard (X11 display server)
- IceWM Session
- Lumina
- MATE
- Plasma (X11)
- Xfce Session
- User script



Sleep



Restart



Shut  
Down



Other...

MAX  
Live  
9

# 10:10 PM

Friday, July 5, 2024



Live System User

Password



Sleep



Restart



Shut  
Down



Other...

- GNOME Classic on Wayland
- GNOME Classic (Wayland)
- Standard (Wayland display server) (Wayland)
- Standard (Wayland display server) (Wayland)
- Plasma (Wayland)
- Cinnamon
- Cinnamon (Software Rendering)
- GNOME Classic on Xorg
- GNOME Classic
- Custom
- Standard (X11 display server)
- Standard (X11 display server)
- IceWM Session
- Lumina
- MATE
- Plasma (X11)
- Xfce Session
- User script

MAX  
Live  
9  
(OLD)

```
CentOS Stream 9
Kernel 5.14.0-472.el9.x86_64 on an x86_64

localhost-live login: liveuser (automatic login)

[liveuser@localhost-live ~]$ ls
install_to_hard_drive
[liveuser@localhost-live ~]$
```

MIN  
Live  
9



```
root@PurplePower:~  
root@PurplePower:~# cat /etc/redhat-release  
CentOS Stream release 9  
root@PurplePower:~# df -h  
Filesystem      Size  Used Avail Use% Mounted on  
none            3.9G  0    3.9G  0% /usr/lib/modules/5.15.153.1-microsoft-standard-WSL2  
none            3.9G  4.0K  3.9G  1% /mnt/wsl  
drivers         447G  145G  302G  33% /usr/lib/wsl/drivers  
/dev/sdc        1007G  1.2G  955G  1% /  
none            3.9G  72K  3.9G  1% /mnt/wslg  
none            3.9G  0    3.9G  0% /usr/lib/wsl/lib  
rootfs          3.9G  2.2M  3.9G  1% /init  
none            3.9G  0    3.9G  0% /dev  
none            3.9G  8.5M  3.9G  1% /run  
none            3.9G  0    3.9G  0% /run/lock  
none            3.9G  0    3.9G  0% /run/shm  
tmpfs           4.0M  0    4.0M  0% /sys/fs/cgroup  
none            3.9G  76K  3.9G  1% /mnt/wslg/versions.txt  
none            3.9G  76K  3.9G  1% /mnt/wslg/doc  
C:\             447G  145G  302G  33% /mnt/c  
D:\             932G  574G  358G  62% /mnt/d  
E:\             1.9T  259G  1.6T  14% /mnt/e  
tmpfs           791M  0    791M  0% /run/user/0  
root@PurplePower:~# uname -a  
Linux PurplePower 5.15.153.1-microsoft-standard-WSL2 #1 SMP Fri Mar 29 23:14:13 UTC 2024 x86_64 x86_64 x86_64 GNU/Linux  
root@PurplePower:~#
```

# WSL 9



# CentOS

Alternate Images SIG

## Future

- Persistent Media
  - This will allow users to customize their Live media
- Raw Images for Aarch64
  - First get raw images working



# CentOS

Alternate Images SIG

## DEMO: WSL Graphics

- Using CS graphical application on Windows
- Install CS9 or 10 on Windows 10 or 11
  - <https://sigs.centos.org/altimages/wsl-images/>
- Install a graphical application
  - `sudo dnf -y install firefox`
- Launch the graphical application
  - `firefox &`
- What works and what doesn't?
  - CS9 - Some things - firefox, nautilus
  - CS10 - Many more things - firefox, nautilus, dolphin, okular, gwenview ... but not everything



**CentOS**

Alternate Images SIG

**Questions**

**Answers**

**Discussion**



# CentOS

Alternate Images SIG

## Meetings

The SIG holds regular [meetings](#) on the 2nd Thursday of each month at 19:00 UTC at

<https://chat.fedoraproject.org/#/room/#meeting1:fedoraproject.org>

Meetings are logged and the minutes for past meetings are [available](#).



# CentOS

Alternate Images SIG

## Mailing List and Communication

The SIG uses the [centos-devel](#) mailing list for coordination and the [#centos-alt-images Matrix channel](#) for interactive communication.